

LARGE SIZE QUICK MEASUREMENT SYSTEMS



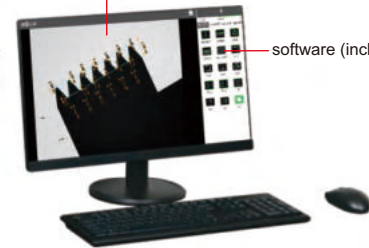
laser sensor
(optional)

coaxial light illumination
(optional)

automatic stage

computer (included)

software (included)



- One or more workpieces can be measured by one step operation
- Place workpieces at any position
- Focus and measure automatically

QMS-A430

SPECIFICATION

Code		QMS-A430	QMS-A450		
Optical lens		Dual-field dual-telecentric low-distortion lens			
Measurement range		wide view field	small view field	wide view field	small view field
		440×300mm	370×250mm	500×400mm	430×350mm
Measurement Accuracy *	without splicing	±3µm ①	±1µm ②	±3µm ①	±1µm ②
	with splicing	±(5+0.02L)µm ③	±(3+0.02L)µm ④	±(5+0.02L)µm ⑤	±(3+0.02L)µm ⑥
Repeatability	without splicing	±1µm	±0.5µm	±1µm	±0.5µm
	with splicing	±2µm	±1.5µm	±2µm	±1.5µm
Travel range (X×Y×Z)		350×250×200mm			
Magnification		3.6X	14.2X	3.6X	14.2X
Depth of field		4mm	0.7mm	4mm	0.7mm
Single pixel size		16.9µm	5µm	16.9µm	5µm
Illumination system	surface light	vertical illuminator, high angle ring white light vertical illuminator, 4-zone low and medium angle ring white light (electric) vertical illuminator, circular (directional) green light (electric)			
	transmission light	telecentric illuminator, green light			
	coaxial light (optional)	vertical illuminator, white light			
Glass stage size		520×420mm			
Max. weight of workpiece		25kg			
Measurement time		<2s			
Measurement data		2D measurement			
Computer		I7-6700, 64G memory, 480G SSD			
Environmental requirement		temperature: 20°C±2°C, relative humidity: 30%~80%, vibration: <0.002g, less than 15Hz			
Power supply		220V, 50Hz, 1200W			
Dimension (L×W×H)		532×497×766mm	1060×824×1818mm		
Weight		800kg			

* The optimum temperature is 20°C±1°C

① Within 73×49mm, on focal position and environment temperature at +20°C±1°C

② Within 16×12mm, on focal position and environment temperature at +20°C±1°C

③ Within 396×270mm, on focal position and environment temperature at +20°C±1°C

④ Within 333×225mm, on focal position and environment temperature at +20°C±1°C

⑤ Within 450×360mm, on focal position and environment temperature at +20°C±1°C

⑥ Within 387×315mm, on focal position and environment temperature at +20°C±1°C

To be continued

Continued from previous page

STANDARD DELIVERY

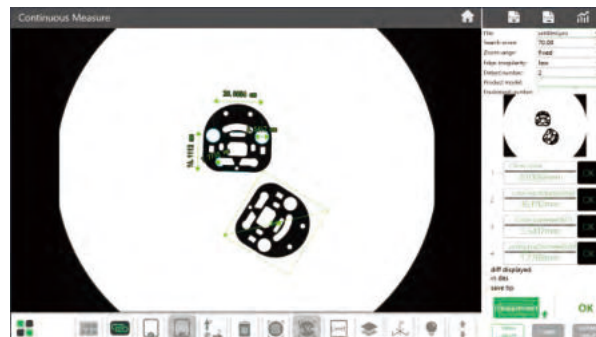
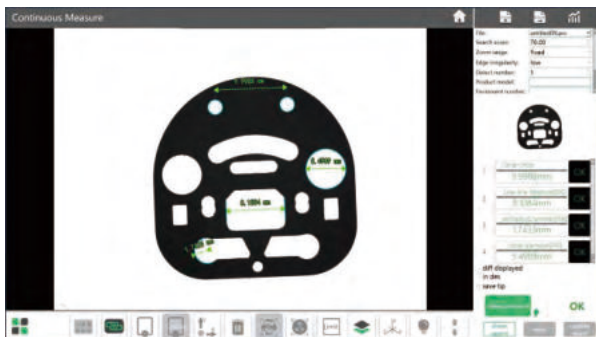
Main unit	1 pc
Computer	1 pc
Software	1 pc

OPTIONAL ACCESSORY

Coaxial light illumination	QMS-23-A1
Data transmission function of software	QMS-23-D
CAD import function of software	QMS-23-C
Laser sensor	QMS-43-SJ
Foot-switch	QMS-43-FS

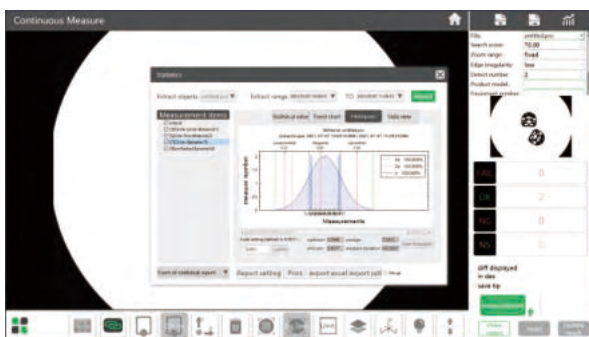
Software (included)

- Automatically measure widths, holes, rings, angles at the same time, simple and efficient.



17

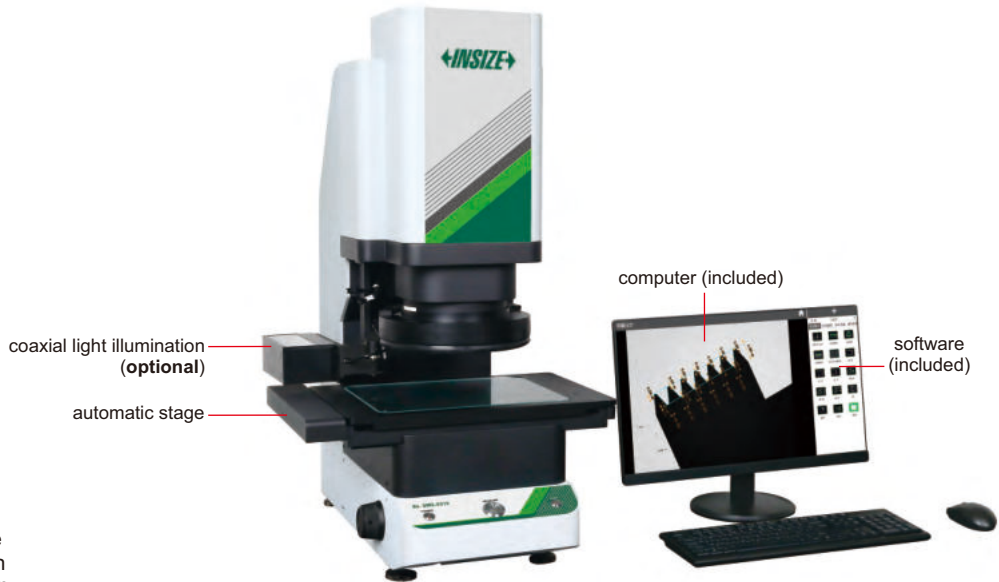
- Measuring result can be stored automatically. OK items and NG items can be counted automatically.



QUICK MEASUREMENT SYSTEMS



laser sensor
(optional)



coaxial light illumination
(optional)

automatic stage

computer (included)

software
(included)

QMS-A315

- One or more workpieces can be measured by one step operation
- Place workpieces at any position
- Focus and measure automatically

SPECIFICATION

Code		QMS-A110	QMS-A315	
Optical lens		Low-distortion lens, single-field telecentric	Dual-field dual-telecentric low-distortion lens	
			wide view field	small view field
Measurement range		100×80mm	100×80mm	25×20mm
Measurement Accuracy *	without splicing	±3μm ^①	±3μm ^②	±1μm ^③
	with splicing		±(5+0.02L)μm ^④	±(3+0.02L)μm ^⑤
Repeatability	without splicing	±1μm	±1μm	±0.5μm
	with splicing		±2μm	±1.5μm
Magnification		3.5X	1.9X	5.75X
Depth of field		5.3mm	40mm	4mm
single pixel size		17.3μm	38.5μm	12.8μm
Travel range (X×Y×Z)		Z axis 75mm	205×125×75mm	
Glass stage size		150×150mm	318×268mm	
Max. weight of workpiece		5kg		
Measurement time		<2s		
Measurement data		2D measurement		
Power supply		220V, 50Hz, 600W		
Illumination system	surface light	vertical illuminator, high angle ring white light vertical illuminator, 4-zone low and medium angle ring white light (electric) vertical illuminator, circular (directional) green light (electric)		
	transmission light	telecentric illuminator, green light		
	coaxial light (optional)	vertical illuminator, white light		
Environmental requirement		Temperature: 20°C±2°C, relative humidity: 30%~80%, vibration: <0.002g, less than 15Hz		
Dimension (L×W×H)		560×234×685mm	532×497×766mm	532×497×766mm
Weight		45kg	60kg	60kg

* The optimum temperature is 20°C±1°C

①② Within 80×64mm, on focal position and environment temperature at +20°C±1°C

③ Within 20×16mm, on focal position and environment temperature at +20°C±1°C

④ Within 270×180mm, on focal position, environment temperature at +20°C±1°C, and workpiece is less than 2kg, L is the travel of stage

⑤ Within 207×117mm, on focal position, environment temperature at +20°C±1°C, and workpiece is less than 2kg, L is the travel of stage

To be continued

Continued from previous page

STANDARD DELIVERY

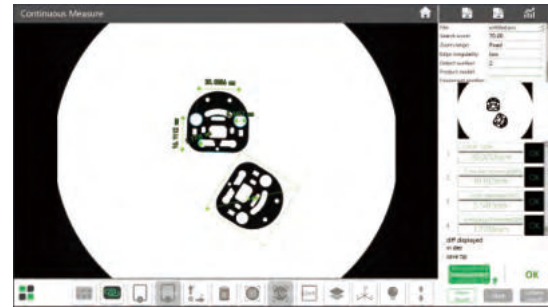
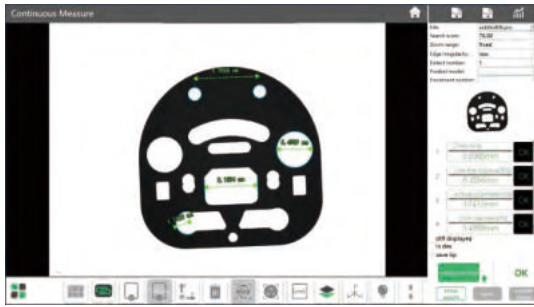
Main unit	1 pc
Computer	1 pc
Software	1 pc

OPTIONAL ACCESSORY

Coaxial light illumination	QMS-23-A1
Data transmission function of software	QMS-23-D
CAD import function of software	QMS-23-C
Laser sensor (only for QMS-A315)	QMS-43-SJ
Foot-switch	QMS-43-FS

Software (included)

- Automatically measure widths, holes, rings, angles at the same time, simple and efficient.



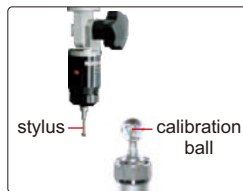
- Measuring result can be stored automatically. OK items and NG items can be counted automatically.



HIGH-DEFINITION VISION MEASURING SYSTEMS



lens with coaxial light (**optional**, must be installed in factory)



probe (**optional**), includes Ø2mm and Ø3mm styli, Ø25mm calibration ball, measuring accuracy is 10µm

- High-definition image
- Large view field
- Electronic magnification feedback lens: when the objective lens magnification is changed manually, the software automatically selects the corresponding pre-calibration data and calibration is not needed



ISD-H210

computer is included



To be continued